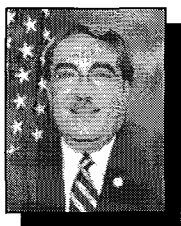




U.S. House 2008 Battleground



Democrat
District



G.K. Butterfield
(D-Wilson)

2008

Total Income

\$778,323

Result

69.8%

Dean Stephens
(R-Hertford)

\$0

30.2%

Democrat
District



Bob Etheridge
(D-Harnett)

2008

Total Income

\$1,633,127

Result

66.9%

Dan Mansell
(R-Johnston)

\$2,700

31.3%

Will Adkins
(L-Mecklenburg)

\$0

1.8%

Republican
District



Walter Jones
(R-Pitt)

2008

Total Income

\$930,474

Result

66.1%

Craig Weber
(D-Carteret)

\$83,159

33.9%

Democrat
District



David Price
(D-Orange)

2008

Total Income

\$1,044,926

Result

63.4%

B.J. Lawson
(R-Wake)

\$492,935

36.6%

Republican
District



Virginia Foxx
(R-Watauga)

2008

Total Income

\$1,711,261

Result

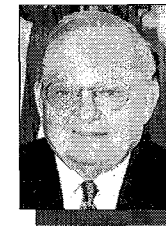
58.3%

Roy Carter
(D-Ashe)

\$210,471

41.7%

Republican
District



Howard Coble
(R-Guilford)

2008

Total Income

\$1,248,561

Result

77.0%

Teresa Bratton
(D-Guilford)

\$111,931

33.0%



U.S. House 2008 Battleground



Democrat
District



Mike McIntyre
(D-Robeson)

2008

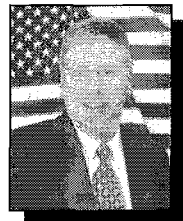
Total Income
\$1,522,256

Result
68.8%

Will Breazele
(R-Bladen)

\$73,390
31.2%

Swing
District



Larry Kissell
(D-Montgomery)

2008

Total Income
\$1,108,006

Result
55.4%

Robin Hayes
(R-Cabarrus)

\$3,403,893
44.6%

Republican
District



Sue Myrick
(R-Mecklenburg)

2008

Total Income
\$1,205,247

Result
62.4%

Harry Taylor
(D-Mecklenburg)

\$217,192
35.9%

Andy Grum
(L-Mecklenburg)

\$0
1.7%

Republican
District



Patrick McHenry
(R-Gaston)

2008

Total Income
\$1,572,547

Result
57.6%

Daniel Johnson
(D-Catawba)

\$626,031
42.4%

Republican
District



Heath Shuler
(D-Haywood)

2008

Total Income
\$1,602,725

Result
62.0%

Carl Mumpower
(R-Buncombe)

\$131,539
35.8%

Keith Smith
(L-Rutherford)

\$0
2.2%

Democrat
District



Mel Watt
(D-Mecklenburg)

2008

Total Income
\$685,959

Result
71.6%

Ty Cobb
(R-Rowan)

\$22,037
28.4%

Democrat
District



Brad Miller
(D-Wake)

2008

Total Income
\$927,083

Result
66.3%

Hugh Webster
(R-Alamance)

\$41,998
33.7%